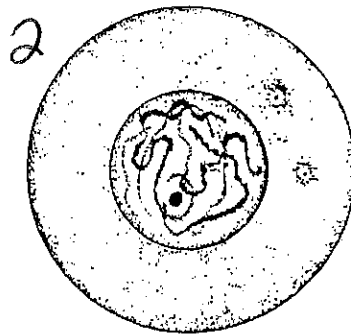
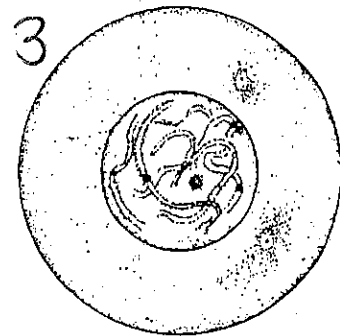


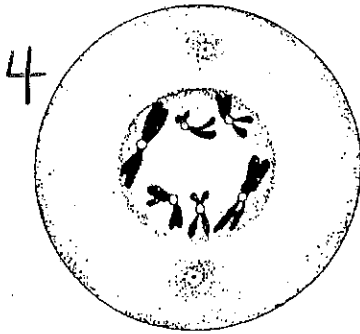
Interphase



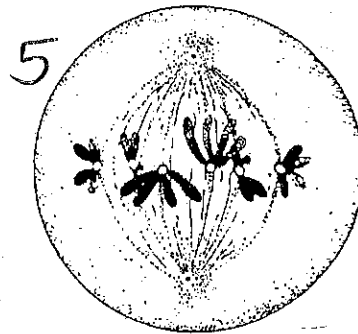
Early Prophase



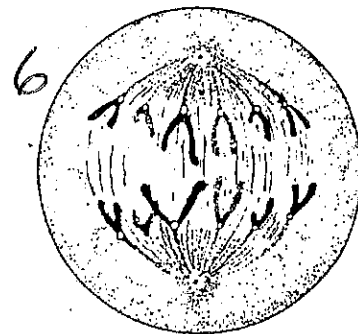
Middle Prophase



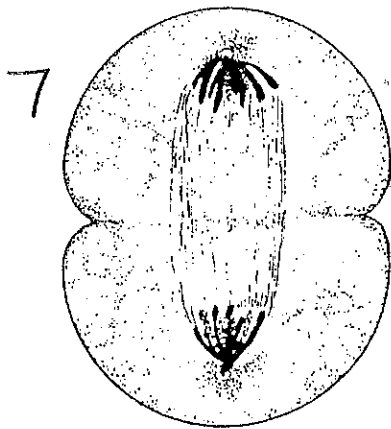
Late Prophase



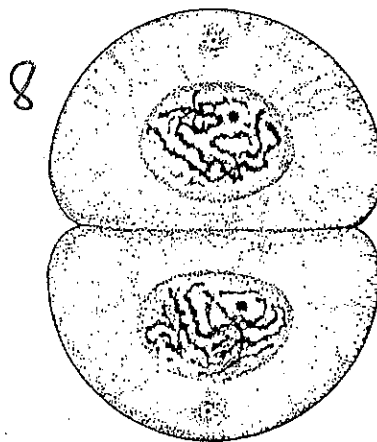
Metaphase



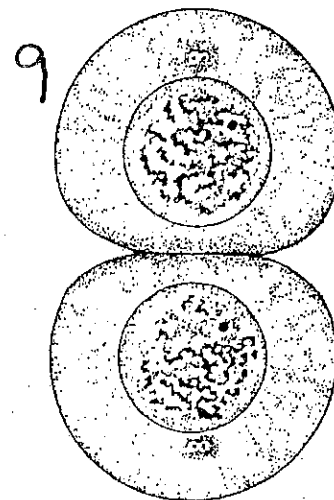
Anaphase



Early Telophase



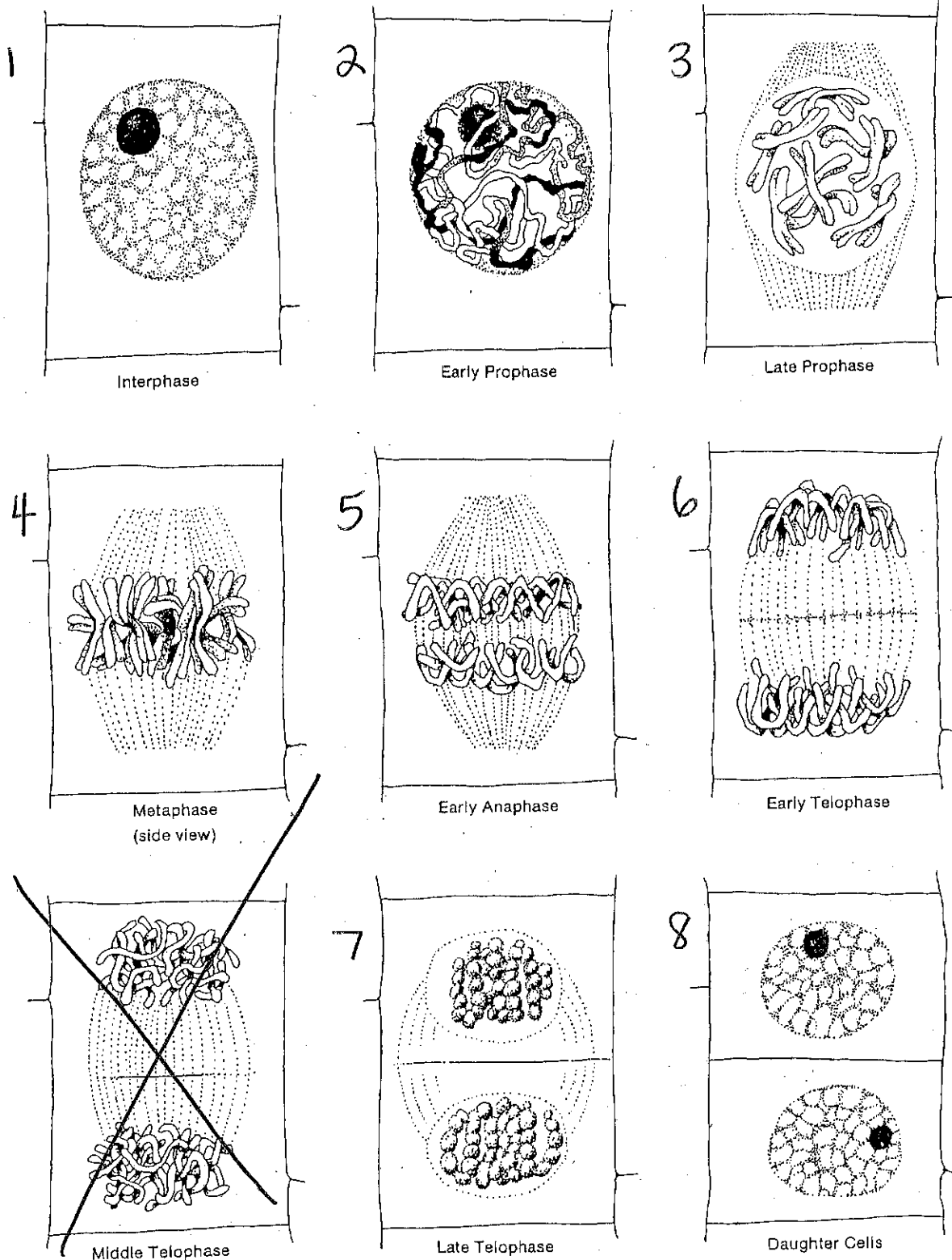
Late Telophase



Daughter Cells

© Kendall/Hunt Publishing Company

Figure 17. Mitosis in animal cells.



©Contemporary Publishing Company

Figure 4-3. Mitosis in Plant Cell